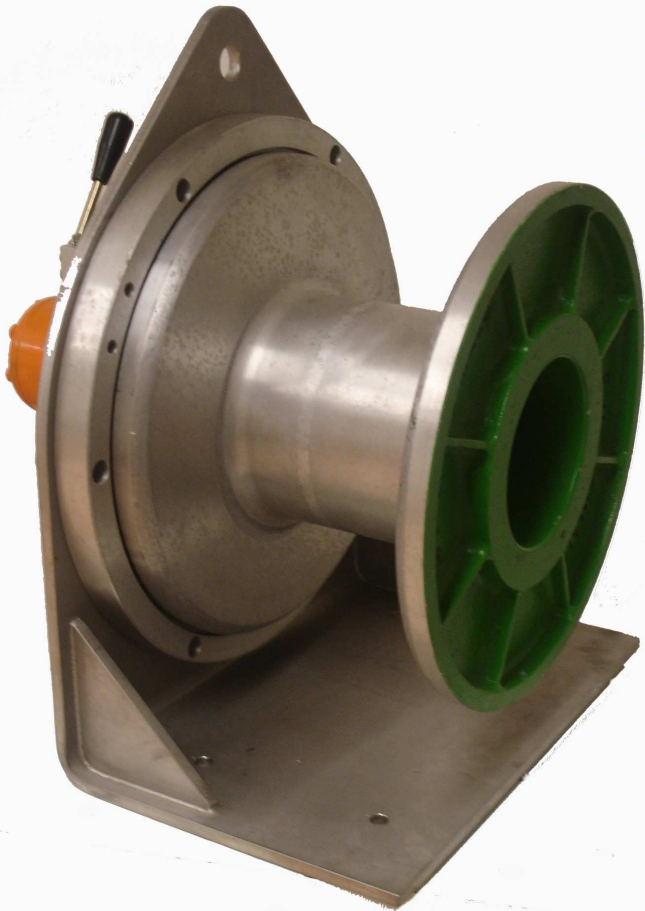


FISHING REEL / HOIST



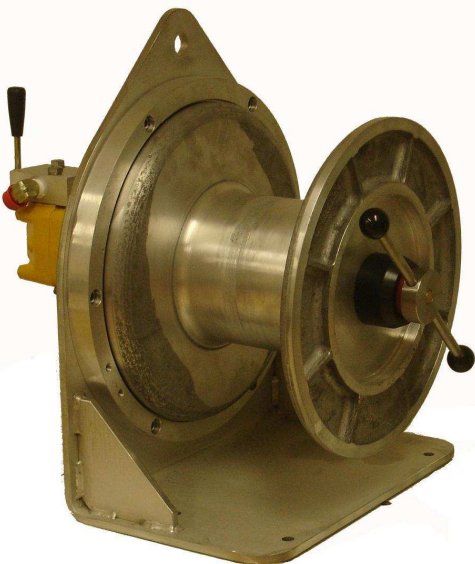
↪ This hoist is extremely compact and is aimed for small trawlers or as a minilongline reel depending on the "LONGLINE" fishing technique on small boats.

↪ Built in cast marine grade aluminium and stainless steel, it has a hydraulic distributor and a pressure relief valve.

↪ The aluminium drum is easily interchangeable.

↪ The drum holds:

- 125m of cables, Ø10mm
- 1000m of lines, Ø3,6mm
- 3000m of lines, Ø2mm



FISHING REEL / HOIST WITH CLUTCH/BRAKE (ref: 456)

↪ There is a model available with a clutch and brake system which enables to control the hauling speed.

REF	Pull (in Kg)	Speed (m/min)	Flow (l/min)	Pressure (bars)		Power (in HP)	Weight (in Kg)
				Service	Max		
455	250	0 to 70	16	120	140	4	50
456	250	0 to 70	16	140	140	5	55

* We reserve the rights to modify all components (shapes, sizes, etc) and product descriptions listed in our product sheets without prior notice.